



Ajrwal Kani
5mg



Senna
40mg



Tejpata
2.5mg



Amla
10mg



Baheda
10mg



Kala Namak
7.5mg



Nishoth
5mg



Mukta Shukti Bhasam



Saunf
2.5mg



Dalchini
2.5mg



Excipient
2.5mg



Harad
10mg

Why Choose Us

3 in 1 Digestion Powder has antacid and Digestive properties of Amla, Harad, Baheda, Senna, Mukta shukti bhasm, Ajwain, Nishoth, Saunf, Dalchini, Tejpatta, and Kala Namak helps in healthy digestion and metabolism. Laxative properties of Amla harad baheda, Ajwain and Nishoth are effective in colon cleansing, thereby may help in easing the constipation condition. Digestion Powder may be useful in gastritis conditions.

Benefits

Bloating
Hyperacidity
Indigestion/Burping
Constipation

Serving Size

1-2 teaspoons with luke warm water at bed time





Aloevera Juice

Aloevera juice revered for its health benefits in all ancient civilizations and modern science. Ayurveda recommends its usage in skin problems, hair fall and dandruff, liver disorders, digestive problems, joint pain, constipation, boost immunity and source of nutrition for complete body as it is rich in vitamins, enzymes and micro-nutrients.

Dosage

Take 30-50 ml of Aloevera Juice mix in 1 glass of water preferably empty stomach in the morning. You can add Honey/Sugar as per your requirement. Consume with in one month after opening the bottle.

Laboratory analysis has listed over 75 nutrients and 200 active compounds including 20 minerals, 18 amino acid and 12 vitamins. Perhaps Aloevera Juice is the only source of phytocyanocabalam. The research claims the overall effects observed may be due to synergistic action of over 75 active ingredients present in the gel.

Detoxify Your Body

Aloevera Juice use is legendary and this information has been passed down through time, enhanced by scientific innovation and centuries of experience.





Why Choose Us:

Your body needs calcium to build and maintain strong bones. nerves also need calcium to function properly. Calcium, along with vitamin D benefits by protecting against cancer, diabetes and high blood pressure.

Vitamin K2 as MK-7 may have a main role in bone tissue improving bone calcium and playing a critical role in the activation of bone formation. Vitamin K2 acts as a potent stimulator of bone regulation and turnover of bone.

Benefit

Help form bones and teeth.

Help maintain body strenght.

Assist in the movement of muscles.

Assist with nerve messaging between the brain and body system.

Help blood flow as vessels relac and constrict.

Release hormones and enzymes that support body functions.



Serving Size

As directed by the physician

www.syearth.com

Follow Us:





Shakkar (Sugar) q.s

Kakadsingi
30mg



Vacha
120mg



Apamarga
120mg



Kali Mirch
30mg



Khursani Ajwain
150mg



Tulsi Panchang
120mg



Mulethi
120mg



Somlata
100mg



Bahera
30mg



Adusa
700mg



Chhoti Kateri
200mg



Pippali
120mg



Baharangi
30mg

Why Choose Us

Sarvaearth Cough Care syrup: is mix broad spectrum ingredients to offer safe and effective control over seasonal allergies, viruses and stimulates body defence against chronic bouts of cough Yastimadhu, Sonth, Tulsi, Somlata Slesmark, Bharangi, Banafsha, Zufah, Vibhitaki, Vasaka, Pudina and Vach in Honey base.

How to use Cough Care syrup?

1-2 teaspoon twice or thrice daily after food

with equal quantity of warm water or as directed by the physician.



Benefits

It may help to relax the throat.
May provide relief from sore throat and tonsillitis
May help fight bronchial allergy
safe for patients of all age groups
Does not contain codein, No sleepy feelings.
It is non-habit forming and non-constipating
No side effects



Jamun
100mg



Aloevera
50mg



Amalki
100mg



Bahera
100mg



Chirayata
100mg



Gurmar
100mg



HairtakiG
100mg



Excipient
as

Why Choose Us

Diabetic is a chronic (long-lasting) health condition lowers our body's capacity to turn food into energy. The key ingredients of diabetic syrup. Jamun, Amla, Bahera, Haritaki, Aloevera, Gurmar, Chirayta.

The Key constituents of Diabetic Syrup:

All ingredients are standardized, tested and scientifically proven for glucose management effect.

Benefit

Supports in maintaining a healthy blood sugar level
Maintains a balance in glucose metabolism
Aids in improving insulin function and sensitivity
Supports reduced sugar and carb absorption
Rejuvenates and regenerates pancreatic cells
Reduces calorie intake and sugar cravings
Aids in maintaining a healthy weight
Helps in lowering post-meal sugar spikes
Protects other organs like kidneys and eyes

Sarving Size

10 to 20 ml or 2-3 teaspoonful hald an hour before meals
or as directed by the physician





Ashwagandha
25mg



Vijayshar
50mg



Chirayta
75mg



Dalchini
10mg



Rose Petals
10mg



Mamejava
75mg



Gurmar
75mg

Why Choose Us

All ingredients are standardized, tested and scientifically proven for immediate benefit and maintaining the glucose management effect.

Gurmar, Chirayta, Mamejava, Karela, Neem, Vijaysaar, Ashwagandha, Kutaj, Chavya, Chitrak, Dalchini, Rose Petals, Kutki.

Benefit

Supports in maintaining a healthy blood sugar level
Maintains a balance in glucose metabolism
Aids in improving insulin function and sensitivity
Supports reduced sugar and carb absorption
Rejuvenates and regenerates pancreatic cells
Reduces calorie intake and sugar cravings
Aids in maintaining a healthy weight
Helps in lowering post-meal sugar spikes
Protects other organs like kidneys and eyes

Serving Size

1-2 tablets half an hour before meals or
as directed by the physician



Chitrak
15mg



Chavya
15mg



Excipient
QS



Kutaj
15mg



Kutki
10mg



Karela
75mg



Neem
50mg



Rasna
30mg



Sudh Shilajeet
105mg



Mochras
30mg



Mitha Surajan
55mg



Godanti Bhasm
35mg



Jailfa
10mg



Kalonji
17mg



Arug
55mg



Yograj Guggul
105mg



Karnel
65mg

Why Body pains

Trauma, back pain and chronic disability (e.g. arthritis) are some major reasons of pain in the musculoskeletal disorders. Other Strenuous daily vocational activities such as lifting, bending or prolonged typing, stress osteoarthritis contracture and degenerative disc disease. All of these disorders may interfere with normal vocational and recreational activities.

Benefits

All herbal supplement
Prompt relief from pain and swelling
Supports joint movement
Free from side effects
Effective in Rheumatoid Arthritis, Osteoarthritis and Gout
Effective in all painful muscular injuries
Good digestive support
Good antioxidant support



Sarving Size

1-2 tablets two times in a day or as directed by the physician
(powder the tablets and take with luke warm water)

www.syearth.com

Follow Us:



Aajwain
50mg



Pudina
100mg



Khadir
50mg



Camphor
50mg



Babool Chhal
50mg



Laung
75mg



Neem
50mg

Why Choose Us

Dental or oral health is concerned with your teeth, gums and mouth. The goal is to prevent complications such as tooth decay (cavities) and gum disease and maintain the overall health of your mouth.

Benefits




Herbal dental are free from chemicals.
Most economical.
Free from fluoride content suitable for children.
Healthy on gums.
Multiple use dental drops, Mouthwash, Mouth freshner, Toothpaste.
Can be used in gum problems also/applied on cavities.



Serving Size

As a tooth Gel: 2-3 drops on our toothbrush & brush gently
As a mouthwash: put 4 drops in 1/4 glass normal water and gargle
For tooth Pain: apply 2-3 drops on moist cotton & apply

www.syearth.com

Follow Us:   



Why Choose Us



It can safely be used to clean
Expensive crockery and cookware
It does not leave scratches.
It has a superior fragrance that lasts
long after rinsing
It is soft on hands.

Liquid Gel is available in two different
fragrances & colours

One Spoon of Sarvaeearth Dish Wash
is enough to clean on sink-full of dirty
utensils.

Dishwasher Liquid Gel deep cleans the
utensils but doesn't leave any residue
Surface recommendation: Sink,
Cookware.

How to use

Add a spoonfull of Dish Wash to a bowl full of water
and apply on utensils as per need. Use few drops
directly on utensils for tough stains. Rub clean and
drain with water.



Why Choose Us



It can safely be used to clean
Expensive crockery and cookware
It does not leave scratches.
It has a superior fragrance that lasts
long after rinsing
It is soft on hands.
Liquid Gel is available in two different
fragrances & colours
One Spoon of Sarvaeearth Dish Wash
is enough to clean on sink-full of dirty
utensils.
Dishwasher Liquid Gel deep cleans the
utensils but doesn't leave any residue
Surface recommendation: Sink,
Cookware.

How to use

Add a spoonfull of Dish Wash to a bowl full of water
and apply on utensils as per need. Use few drops
directly on utensils for tough stains. Rub clean and
drain with water.



Glass

Cleaner




Sarvaeearth Glass Cleaner

1. Sarvaeearth Glass Cleaner removes stubborn dirt, finger prints and dust, leaving a lasting shine
2. It doubles as multi-surface cleaner, ideal for glass, mirror, and similar surfaces
3. The surface cleaner can be used on tabletops, windows, TV screens, computer monitor, stainless steel etc.
4. The glass and surface cleaner spray also removes 99.9% germs*
5. Easy to use - Just spray and wipe for a streak free shine!



How to Use
Just spray & wipe clean

www.syearth.com

Follow Us   



Triphala
1500mg



Amaltas
800mg



Gulab Patti
1500mg



Nishoth
500mg



Aloevera
500mg



Giloy
500mg



Methi
700mg



Sanay
400mg



Nagarmotha
600mg



Mulethi
1100mg



Saunf
1000mg

Why Choose Us

Gas forms in our large intestine when bacteria ferment the undigested food. Bacteria also increase in the undigested starches. Key herbs used are: Gulab patti, Triphala, Mulethi, Giloy, Aloevera, Nagarmotha, Saunf, Amaltas, Fenugreek, Nishoth and Sanay

Benifits

Go Gas syrup is an effective remedy for indigestion and gas problems after heavy meals. It is also useful in hyperacidity, indigestion and gripping pain intestine. Go Gas syrup fully digests the food and relieves Gas and Clearance also

Serving Size

Mix 2 teaspoon (15ml) with an equal amount of water, twice daily regularly after meals or as directed by the physician





Black Salt
5mg



Camellia sinensis
200mg



Excipient
QS



Ocimum
Sanctum
25mg



Zingiber
officinale
25mg



Cinnamomum
zeylanicum
25mg



Citrus
Lemon
25mg



Vitis
vinifera
100mg



Piper
Nigrum
25mg

Why Choose Us

The Sarva Green Tea is blend of chosen herb extracts from Green Tea, Grape seed, Cinnamon, Tulsi, Lemon, Ginger, and Kali Mirch which keep your body fresh with their antioxidant action. You enjoy the feeling of well-being as your system is detoxified and strengthened, leaving you light in body and soul.

Benefits

Better Immunity.
Improved Liver & Gallbladder Functioning.
Blood Purification.
Youthful Glow.
Weight Management.

How to Use

The best time to drink detox tea is in the morning, 15-20 minutes before your first meal and take one to two times a day. Or directed by the physician.





Sugar
20ml



Ark Gulab
2ml



Ark Kewra
2ml



Silver Leaves
50ml



Syrup base
q.s



Aloe Vera
10ml



Nagarmotha
400mg



Giloy
5mg



Kesar
2mg



Tulsi
50mg



Ashvagandha
100mg



Punamava
5mg



ElachiG
2mg

Why Choose Us

Healthy lifestyle is essential for kids growth & development. Eat balanced diet full of essential energy, nutrients and fruits to develop good immunity. Sarva Kids Care is a balanced tonic for complete care of their growing body need and keep them fully active.

Benefits

Good herbal and tasty supplement that gives dosage compliance, Good appetite, improved immune function, improved mental and physical agility, good recovery support from routine problems.

Serving Size

15-20 ml 3-4 teaspoon twice daily or as directed by the physician.



www.syeearth.com

Follow Us:



Benefits

Liquid Detergent is low on Alkaline hence does not cause any damage to your garments making your clothes gentle to touch. It is low foaming product specially designed for both hand wash and washing machines.

Effectiveness:

Being liquid detergent it dissolves quickly in high water level environment of washing machines, reaches stains effortlessly and leaves no residue on clothes or in machine.

Suitable For:

Sarvaeearth Liquid Detergent is suitable for washing all types of clothes including delicate garments and fabrics like silk, wool and lace. And this Detergent is completely safe for both front and top load washing machines.

Performance:

This Detergent Liquid gives tough stain removal in just 1 wash, as well as prevent your coloured clothes from fading and retains the original colours of the fabrics.

USAGE

For usage, Add 8ml (1 1/2 Teaspoon) of the laundry detergent to a gallon (3.79 litres) of water and soak the clothes for half an hour and wash the usual way.



Why Choose Us

The healthy liver is the main element of robust health. Modern atmosphere, food and medicines adversely effect our liver health. Sarvaeearth brings you the natural solution to keep your liver healthy. Liver care is a product of well tried and tested pure ayurvedic herbs.


Suggested Serving

Two teaspoons twice after food or as directed by physician

Benefits

It may help to maintain healthy liver.
Enhance the the body's immune power.
Detoxify the body.
Improve the degestive function.
Can be used when recovering from viral hepatitis or liver damage due to toxic medicines or alcohol.



Follow Us:   

www.syeearth.com



Acai Berry



Elder Berry



Blue Berry



Strawberry



Rasp Berry



Mulberry



Cranberry



Bilberry



Bearberry



Gojiberry



Seabuckthron



Blackberry



Bayberry



Gooseberry

Why Choose Us

Multi berry juice is rich in nutrients,minerals,vitamins and fiber which we normally do not get in our daily diet. They naturally provide us with antioxidant protection to defend us from atmospheric toxins.& cholesterol.

Benefits

- 1.Loaded with anti-oxidants,proteins,and fibers
- 2.Boost immunity and Energy level
- 3.Rich in Omega 3,6 & 9 fatty acids
- 4.Rich source of Vitamins,minerals,and essential
- 5.Amino acids May reduce oxidative stress,and lowers blood pressure

Sarving Size

30ml Juice consume directly or mix with equal amount of water.Always drink on an empty stomach. 30 minutes before food.Drink lots of water throughout



Dewberry



Crowberry



www.syearth.com

Follow Us:



Omega-3 Benefits

Strengthens Joints- Omega 3 consists of 500mg bioavailable oil with 90mg EPA & 60mg DHA. These fatty acids help in inflammation reduction for great joint health

Boosts Muscle Building- Omega 3 has fatty acids that may reduce post-workout muscle soreness, and help with Delayed Onset Muscle Soreness (DOMS) and muscle building

Improves Heart Health- These Omega 3 capsules 500mg contain essential 'good' fats needed for optimal heart health. Eicosapentaenoic acid (EPA) helps reduce cholesterol levels in the body, enhancing heart health

Maintains Brain Function- These omega 3 capsules are packed with docosahexaenoic acid (DHA)) which helps in the normal functioning of the brain

Supports Skin Health- Daily dose of Omega 3 is ideal to promote healthy skin by reducing inflammation and locking in the moisture making it look healthy and glowing

How to use

1 Caps twice a day or as recommended by your physician.





Ashwagandha

10%



Excipient
q.s



Lahsun
5%



Khursani Ajwain
5%



Loh Bhaskar
1.25%



Kali Mirch
1.25%



Sudh Kuchla
1.25%



Salai Guggal
10%



Sounth Powder
5%



Rasna
40%



Pippal
1.25%

Why Choose Us

Sarvaeearth Ortho Powder is a mix of well tried and tested herbs in pain relief: Salai Guggal, Ashwagandha, Shuddh Kuchla, Pippali, Sonth, Rasna, Khursani Ajwain and Kali Mirch.

Benefits

Swelling and pain in our muscles and joints
Relief and movement of joints in arthritis.
Neck Pain, Low back pain, sports injuries, sprains.



Serving Size:

1-2 small spoons with luke warm water after food.

www.syearth.com

Follow Us:



Tarpin
3%



Gandhpura
10%



Base Vegetables Oil
Q.S



Pudina
3%



Ajowain
1%



Dalchini
1%



Nilgiri
2%

Pain Oil

Quick relief from knee pain,spasm,and sprains with Sarvaearth Pain Oil.

Sarvaearth Pain Oil is a fast-absorbing formula that allows easy penetration and instant relief to the affected areas,improving flexibility,range of motion,and blood circulation while reducing swelling,pain,and muscle spasms.

Soothes sore muscles and joints-Sarvaearth Pain Oil,a unique preparation that works together to ease your pulled muscles and twisted knees.

Sarvaearth Pain Oil,is a quick-absorbing formula which absorbs effortlessly into the skin.

Usage

For external use only.Apply the required amount of Sarvaearth Pain Oil over affected areas.Massage gently in slow,circular motions and let your skin absorb the oil.
There is no need to heat this oil and if need be it can be applied daily.

Note:

Please be aware that Sarvaearth Pain Oil should not be applied if the skin has any cuts.If you are using it for the first time,we recommend doing a patch test to rule out any allergies.





Nilgiri oil
5%V/V



Levang oil
10mg



Sudh Kuchla
25mg



Til Oil Base
Q.S



Ajwain Satva
10mg



Ashwagandha
50mg



Kapoor
20mg

Pain Roll On

This Pain Roll on oil Specially formulated topical oil for relief from stiffness,pain & inflammation of the joint & muscle.It is a blend of carefully selected 5 natural oils & herbs that have specific therapeutic properties of fast and long-lasting pain relief.

Benefits

In all type of Joint,Back,Knee,Ankle,Shoulder,Neck,Arm,Wrist, Hand and Muscle Pain,Swelling & inflammation of joint and muscle,Bone Weakness,Sprain,Muscular aches and Muscle Stiffness.

Instruction for Use

Gently apply Pain Roll On Oil on the Area of pain or injury with the help of roll on.Message gently with hand till the oil gets absorbed in the skin.For better results take Ortho Powder also



www.syearth.com

Follow Us:   



Why Choose Us

We are living in the atmosphere filled with pollution of burning fuel, industrial chemical with pollution of our food. These impurities add toxins to our body and no amount of creams, serums and other skin care products can bring natural glow on our face. Our skin health is reflecting our inner health always. Hence you must remove toxins from blood before skincare products to get the magic on our skin. Sarvaeearth Rakt Saaf in one of the easiest ways you can purify your skin with the godness of herbs that have detoxifying properties.

Benefits

This Natural Sarvaeearth Rakt Saaf helps in improving blood circulation. It brings about shine and glow on skin and you will love how your skin health will improve in no time. It may also help in curing skin diseases. Besides, if you want a pimples-free skin, then you must try it out once and see the results for yourself.

Serving Size

1-2 teaspoonfull after breakfast and dinner or as directed by the physician



Harad-50mg



Vidang-50mg



Organic Manjista 300mg



Triphala-200mg



Chopcheenee-50mg



Motha-250mg



Sanaya-50mg



Mundi-250mg



Organic Daruhaldi 200mg



Giloy-250mg



Organic Neem 300mg



Chirayata-200mg



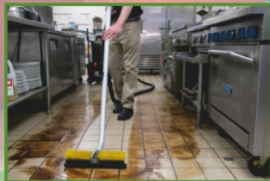
Raktachandanam-200mg



Amla

Follows Us:   

www.syearth.com



Surface Cleaner

For 99.99% germs-free* floors.: 10x Surface Cleaner with gems disinfectant, an all-purpose offers 10x clean ability: Our floor cleaner liquid cleans tough stains like coffee, tea, ketchup, and oil, from ceramic, marble, granite, and mosaic

Surfaces.

10x Surface Cleaner with gems disinfectant: has benzalkonium chloride solution, purified water, and Rose fragrance, among other

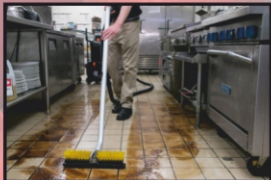
Ingredients.

Use 10x Surface Cleaner with caution: Keep away from children and direct sunlight. If it comes in contact with your skin or eyes, rinse with water and seek medical attention if irritation.

Persists.

The dual-action formula: of 10x Surface Cleaner is easy to use.

Use one cupful (15ml) in half a bucket of water (4 ml) for floor and bathroom Surface. Apply undiluted on kitchen Surface and rinse after 10 minutes.



Surface Cleaner

For 99.99% germs-free* floors.: 10x Surface Cleaner with gems disinfectant, an all-purpose offers 10x clean ability: Our floor cleaner liquid cleans tough stains like coffee, tea, ketchup, and oil, from ceramic, marble, granite, and mosaic

Surfaces.

10x Surface Cleaner with gems disinfectant: has benzalkonium chloride solution, purified water, and Rose fragrance, among other

Ingredients.

Use 10x Surface Cleaner with caution: Keep away from children and direct sunlight. If it comes in contact with your skin or eyes, rinse with water and seek medical attention if irritation.

Persists.

The dual-action formula: of 10x Surface Cleaner is easy to use.

Use one cupful (15ml) in half a bucket of water (4 ml) for floor and bathroom Surface.

Apply undiluted on kitchen Surface and rinse after 10 minutes.



Toilet Cleaner Benefits

Bathroom Cleaner: kills 99.9% of germs Effective on tiles, floor, basin, and most bathroom surfaces

Available in variants: Lemon, floral, Thick liquid formula with powerful cleaning agents

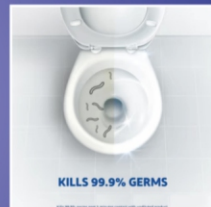
Removes tough stains: Pleasant fresh fragrance

Surfaces-recommendation: floor, sink, tile



How to use

Spread over the dirty surface rub with cleaning brush and drain with water;
Avoid touch with eyes
keep away from children



www.syearth.com

Follow Us   



Krishna Tulsi
1ml



Ram Tulsi
1ml



Arjak Tulsi
1ml



Van Tulsi
1ml



Sweet Tulsi
1ml



Why Choose Us

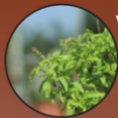
To fight against the challenge of Pollution Sarvaearth Panch Tulsi Drops a blend of 5 different varieties of Tulsi helps you support faster relief of common health problems

Benefits

Very effective in reducing acidity, constipation, stomach ache. It helps to reduce hypertension, Fatigue, and Vomiting. It acts as an immunity booster. It helps to get rid of Bad breath. Effective in reducing Sinusitis, Cough, running nose, etc. Helpful in quitting smoking

How to Use

Mix 5-10 drops in a glass of water and feel free to consume it 4-5 times a day. You can also add this to your tea or juice to improve its nutrition value.



Varuna
100mg



Kutki
50mg



Pasha bhed
300mg



Punernava
200mg



Giloy
100mg



Jawa khar
70mg



Gokhshru
200mg



Sudh fatkri
80mg



Vasaka
100mg



Dhaniya
200mg



Why Choose Us

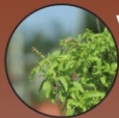
Gout is a problem due to excess uric acid in the blood. It is an intensely painful condition needing immediate relief free from side effects. Uric Acid Syrup ensures prompt relief joint pain and restore the balance of uric acid level in our body.

Benefits

Uric Acid Syrup utilizes premium herbs to help in healthy uric acid metabolism in the body and offer prompt relief. They help to improve the liver and kidneys and support the joints against excess uric acid. Ensure an optimum balance of uric acid in the body.

Serving Size

1-2 teaspoons three times a day at 6hr gap period after food or as directed by the treating physician. Follow up after 1-2 weeks with Sarvaeearth uric acid tablets for maintaining the body's uric acid levels. Ensure 8-10 glasses of water intake during supplementing



Varuna
50mg



Kutki
15mg



Pasha bhed
50mg



Punernava
50mg



Amla
40mg



Dhaniya
25mg



Gokhru
50mg



Salai Guggal
75mg



Bahera
40mg



Sonth
25mg



Guduci
40mg



Harar
40mg



Dhania
25mg



Excipient
qs



Benefits

Premium herbs used to help in Uric acid metabolism in the body. They help to improve the liver and kidneys and support the joints against excess uric acid. Ensure an optimum balance of uric acid in the body.

Why Choose Us

Gout is a problem due to excess uric acid in the blood. It is an intensely painful condition needing immediate relief free from side effects. Uric acid tablets ensure prompt relief of joint pain and restore the balance of uric acid level in our body.

Serving Size

1-2 tablets after breakfast and dinner or as directed by the treating physician



Ashok tavak
500mg



Amla
100mg



Sonth
100mg



Lodhra tavak
500mg



Giloy
200mg



Gokhru chhota
200mg



Kachnar chhal
250mg



Chikni Supari
100mg



Ajwain
100mg



Shatavari
150mg



Ashwagandha
250mg



Haritki
100mg



Bahera
100mg



Arjun tavak
250mg



Vidari kand
125mg



Mustaka
125mg

Why Choose Us

Is a carefully formulated and blended pure herbal product is based on Ayurveda to offer very quick and effective relief from the presenting problems in women health issues linked with imbalance of lifestyle.

Benefits

It may help in the management of heavy menstrual bleeding. It also helps in treating irregular, delayed or painful periods. It may also help in excess or pain ful Leucorrhoea or white fluid problem.

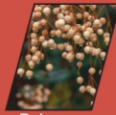
Sarva Woman Care Syrup has rich properties which are helpful in the treatment of menopause-related symptoms. It also promotes the quality of life in menopausal women. It may also help in controlling excessive menstrual bleeding, bleeding hemorrhoids, and bleeding ulcers.

Help to Detoxify the body.
Helps to scavenge free radicals
Boost immunity

How to Use

2-3 spoons twice a day after meals with water or as directed by the physician.





Bakayn
70mg



Makoy
70mg



Ghrit kumari
50mg



Rasont
50mg



Harad
200mg



Neem Patra
70mg

Benefits:

Help to treat piles, reduce pain and prevent constipation. Based on pure ayurvedic formulation.

Storage:

Store in a cool and dry place. Keep away from direct sunlight.

Caution:

Keep the container tightly sealed at all times when not in use. Not to be taken by children below the age of 10

Dosage:

- 1 Capsules 2 times daily with butter milk or as directed by the physician

Side Effects- Nil





Almond



Rosemary



Madhuyashti



Amla



Shikakai



Bhrigraj



Brahmi



Reetha

Hair Cleanser

About us:

Sarvaeearth Rosemary Hair cleanser is made using 100% natural and ayurvedic ingredients. It helps in treating dry and damaged hair. Ingredients present in this hair cleanser have special properties that help to make the hair shinier and healthier.

Storage:

Store in a cool, dark and dry place. Keep away from direct sunlight.

Caution:




Keep out of reach of children. Avoid contact with eyes, if contact occurs, rinse with cool water.

Direction for use

Apply to wet hair, gently massage and work into a lather.
Rinse thoroughly.



www.syeearth.com

Follow Us:   



Amla



Neem Patra



Bhringraj



Olive oil



Groundnut oil



Almond oil



Jatamansi oil



Sesame oil

BHRINGRAJ HAIR OIL

Pure Maka's Ayurvedic Medicine

Bhringraj Hair Oil

An effective combination of oil specially formulated to prevent hair loss. This oil helps to prevent hair fall and nourishes the scalp. It helps to get healthier and shinier hair.

Caution:

If irritation occurs, discontinue immediately

Direction of use:

Massage oil deep in to your scalp for 5-10 minutes with your finger tips. Leave it on for 30 minutes Before you shampoo

Store in a cool & dry place
keep away from direct sunlight keep out of reach of children





CURCUMIN FACE WASH



Honey



Turmeric



bitter Orange



Caution:

Keep out of reach of children. Avoid contact with eyes, if contact occurs, rinse with cool water. Store in a cool and dry place.

Direction To Use

Take the desired quantity and apply it over moist facial skin in circular motion, to build up lather. Gently rinse off with clean water.



Luxurious Bathing Bars



Pure Bath-Time

Glycerin

Vitamin
E

Soap
Base

Aloe Vera



ALOE VERA + GLYCERIN

Natural
Handmade
Soap

Made in India
100g

www.syearth.com

Follow Us:   

SANITARY NAPKINS



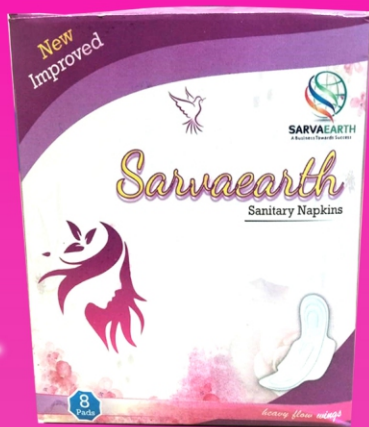
SARVAEARTH
A Business Towards Success

- COTTONY
SOFT FEEL
- SUPER
ABSORBENT
POLYMER
- ULTIMATE
LIQUID
ABSORPTION
BLUE STRIP

FOR MORE INFOR



SCAN HERE



www.syearth.com

